

Roosevelt Construction Open House

January 29, 2013



Tonight's Agenda

- 6:00 pm - Open House
- 6:30 pm - Presentation
 - **Welcome/introductions** – Ron Endlich, Northgate Link Extension Deputy Project Director
 - **Construction update** – Ellen Blair, Community Outreach
 - **Seattle City Light plans**– Stephen Byers, Seattle City Light
 - **Next Steps**
 - **Questions and Answers**
- 7:30 pm - Return to Open House
- 8:00 pm - Close



Link Light Rail System

- 16 miles of light rail with 13 stations currently in service
- University Link and Angle Lake Station under construction; open 2016
- ST2 Plan funded extensions to Overlake, South King County, and Lynnwood
- 54 mile system



Northgate Link Extension (University District to Northgate)

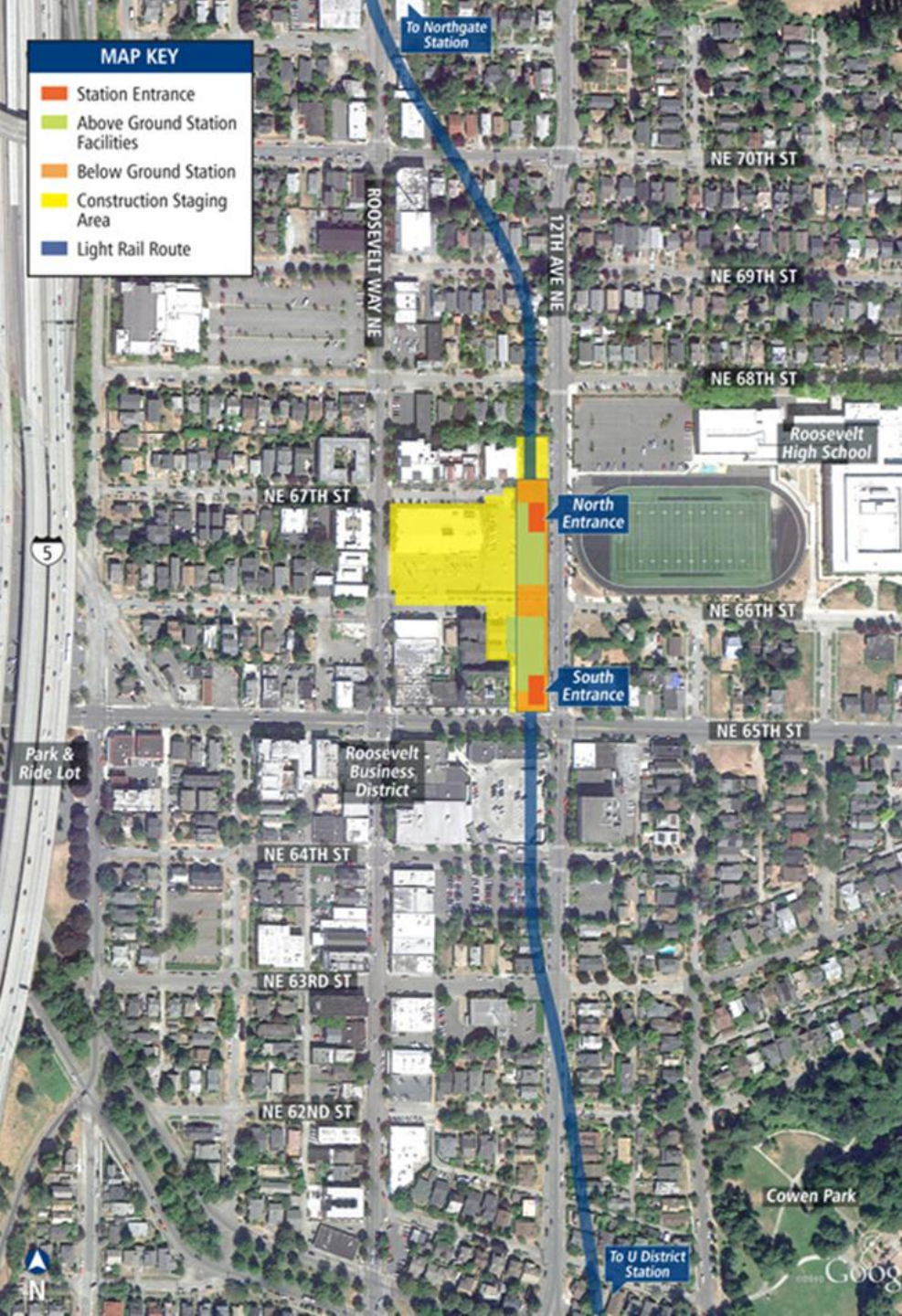
- 4.3-mile light rail extension
- Stations: U District, Roosevelt, and Northgate
- Open for Service: 2021
- 62,000 daily boardings added to system by 2030



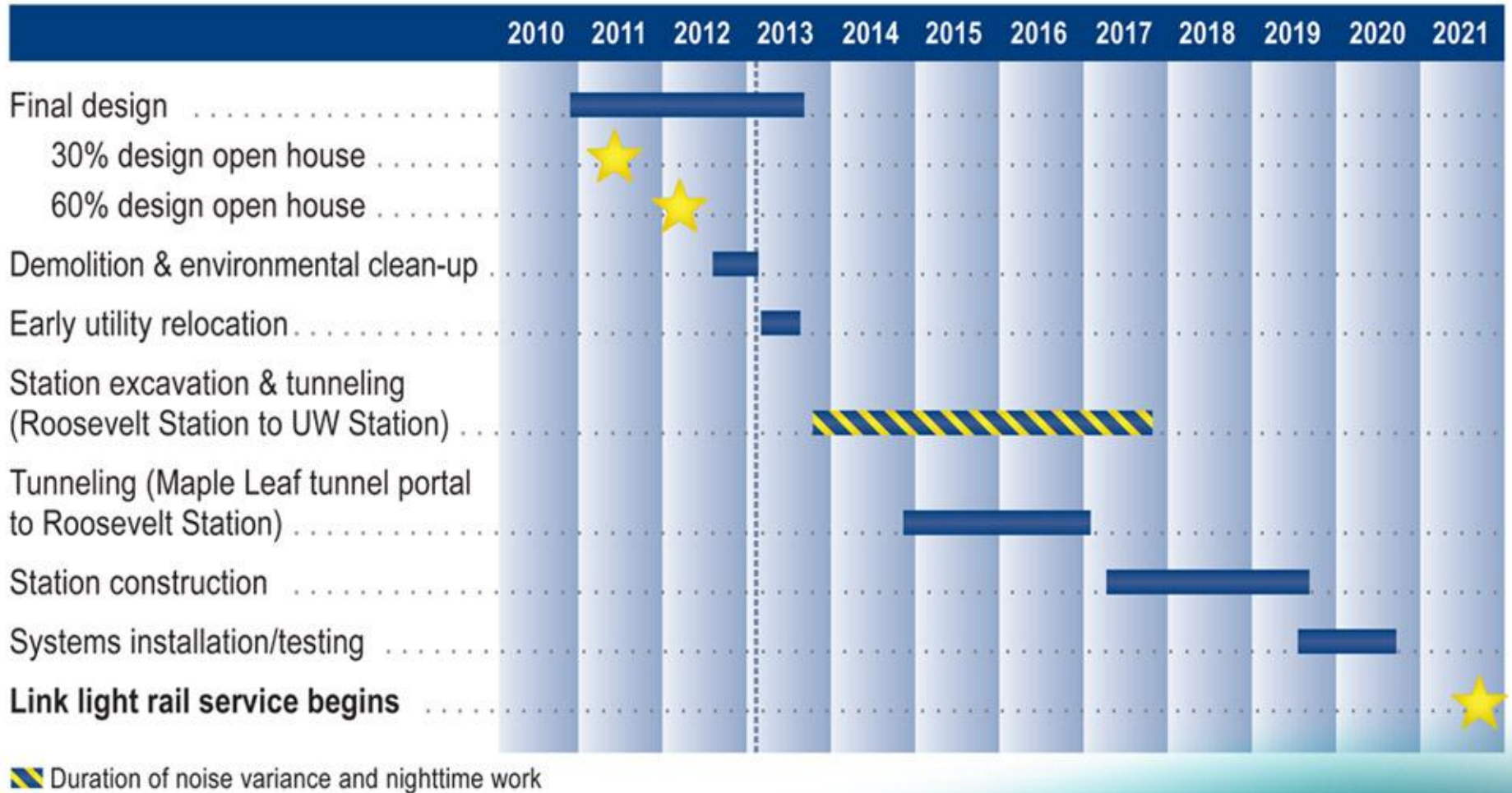
Roosevelt Station

Key Features

- Station platform 70'-90' underground
- Elevators, escalators and stairs at both entrances
- Bicycle parking
- Connections to buses on NE 65th St, 12th Ave NE and Roosevelt Way NE
- 8,000 daily boardings (2030)



Roosevelt Station Site Schedule



Building Demolition and Environmental Clean-Up In Progress – Finished Early 2013



Early Utility Work

Early – Mid 2013

- **Seattle City Light:** upgrade overhead power lines, install new power poles and relocate power lines, remove old poles
- **Comcast:** Relocate lines
- **CenturyLink:** Relocate lines
- **Sound Transit:** rebuild duct banks for underground utility lines
- **Puget Sound Energy:** Relocate gas lines, cut and cap unused gas lines.

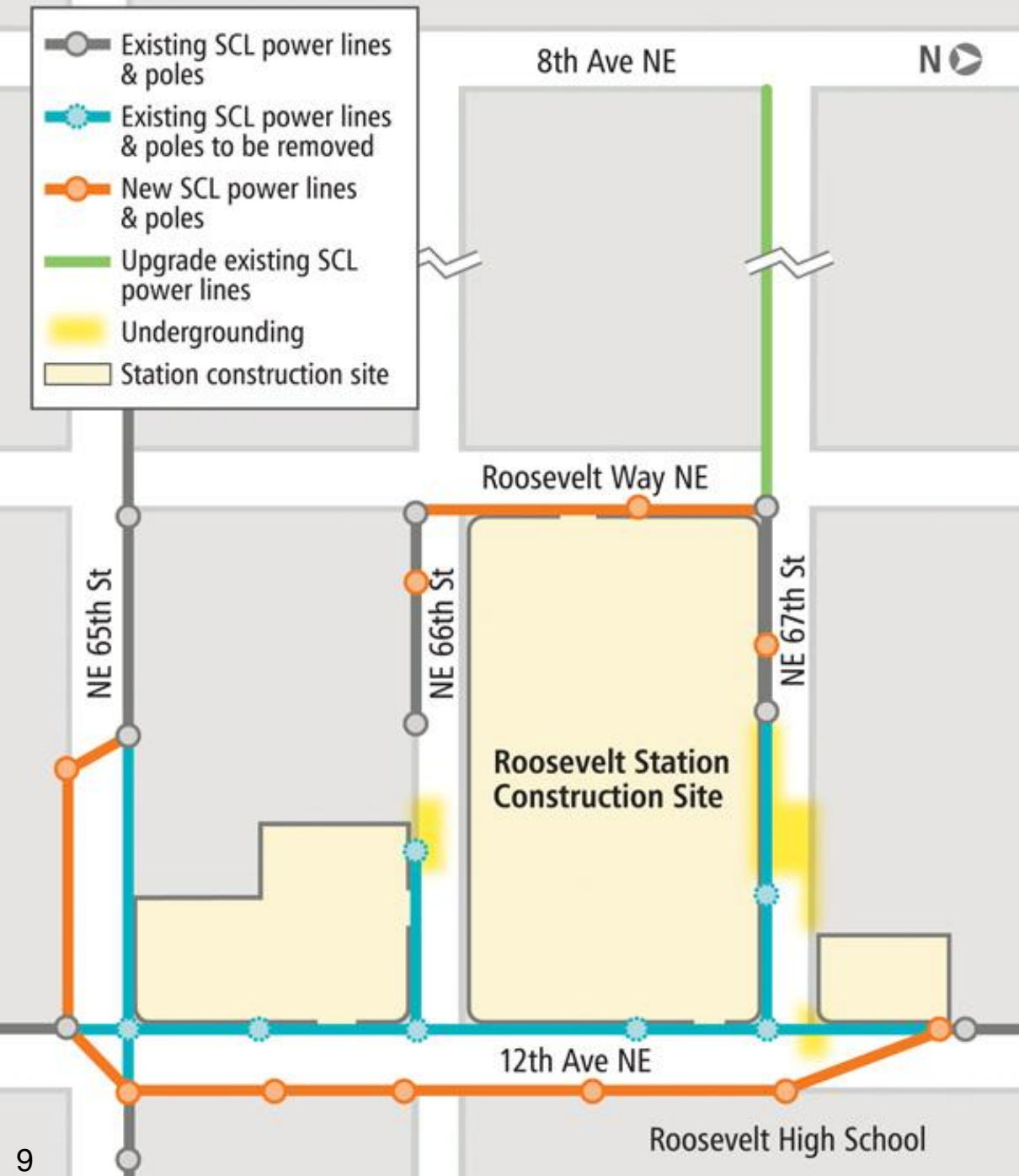
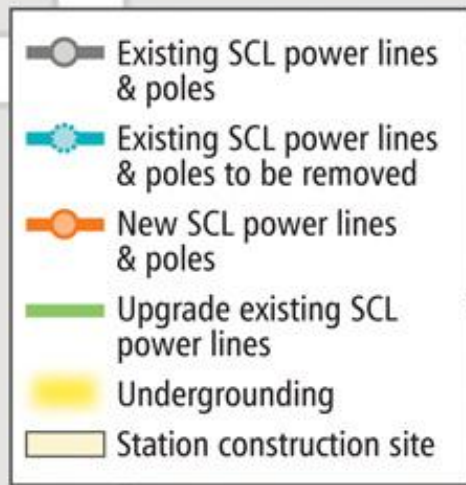


Your Seattle City Light

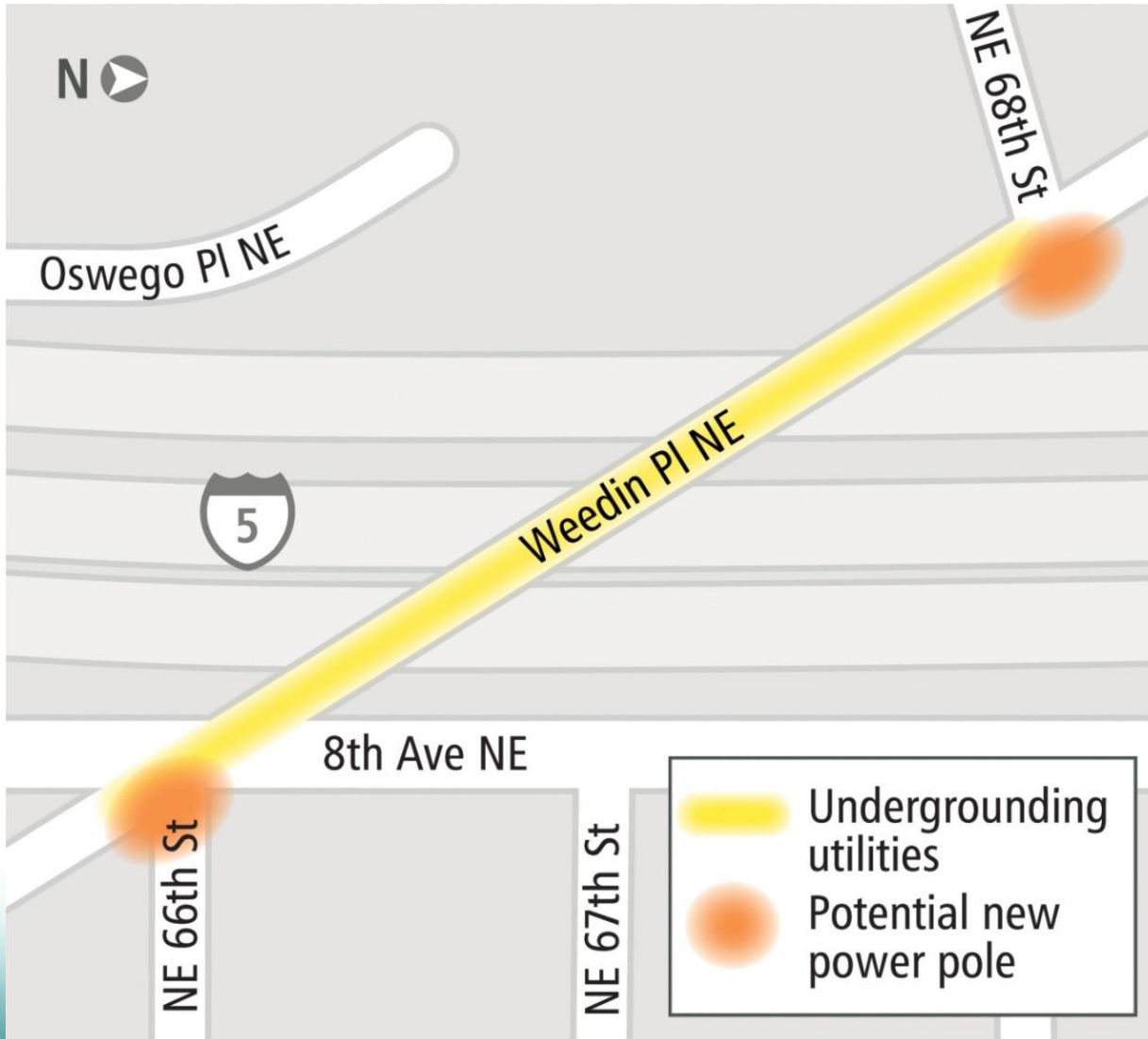
Overhead Utility Work

Early - Mid 2013

- Temporary sidewalk, parking, or lane closures
- Utilities will contact customers

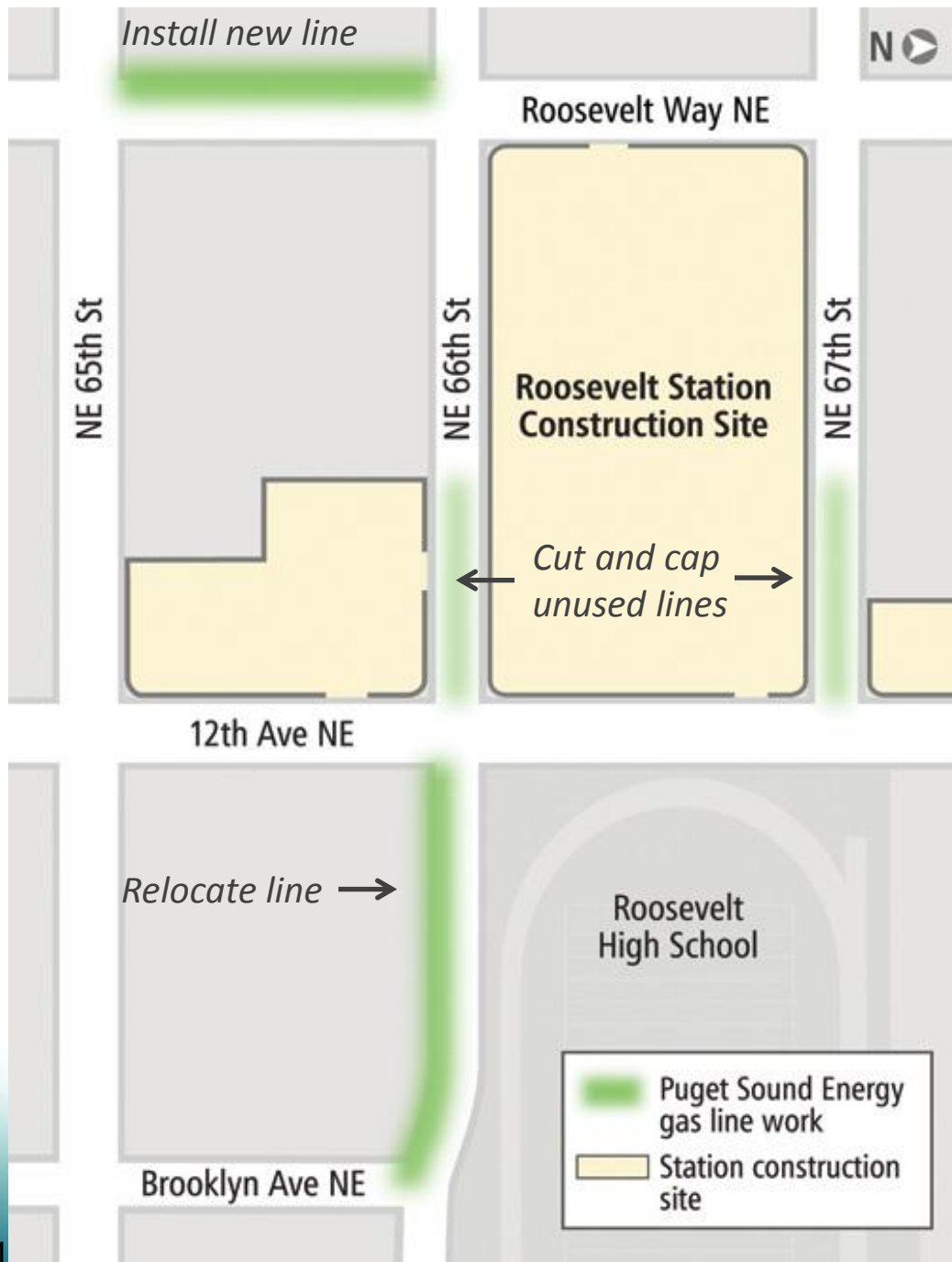


Utility Undergrounding - Weedin Place NE 2014



Your Seattle City Light

- 4 – 6 months of work
- Temporary sidewalk, parking, or lane closures
- Traffic will be maintained



Gas Line Work Early - Mid 2013

- Approximately one month of work
- Temporary sidewalk, parking, or lane closures

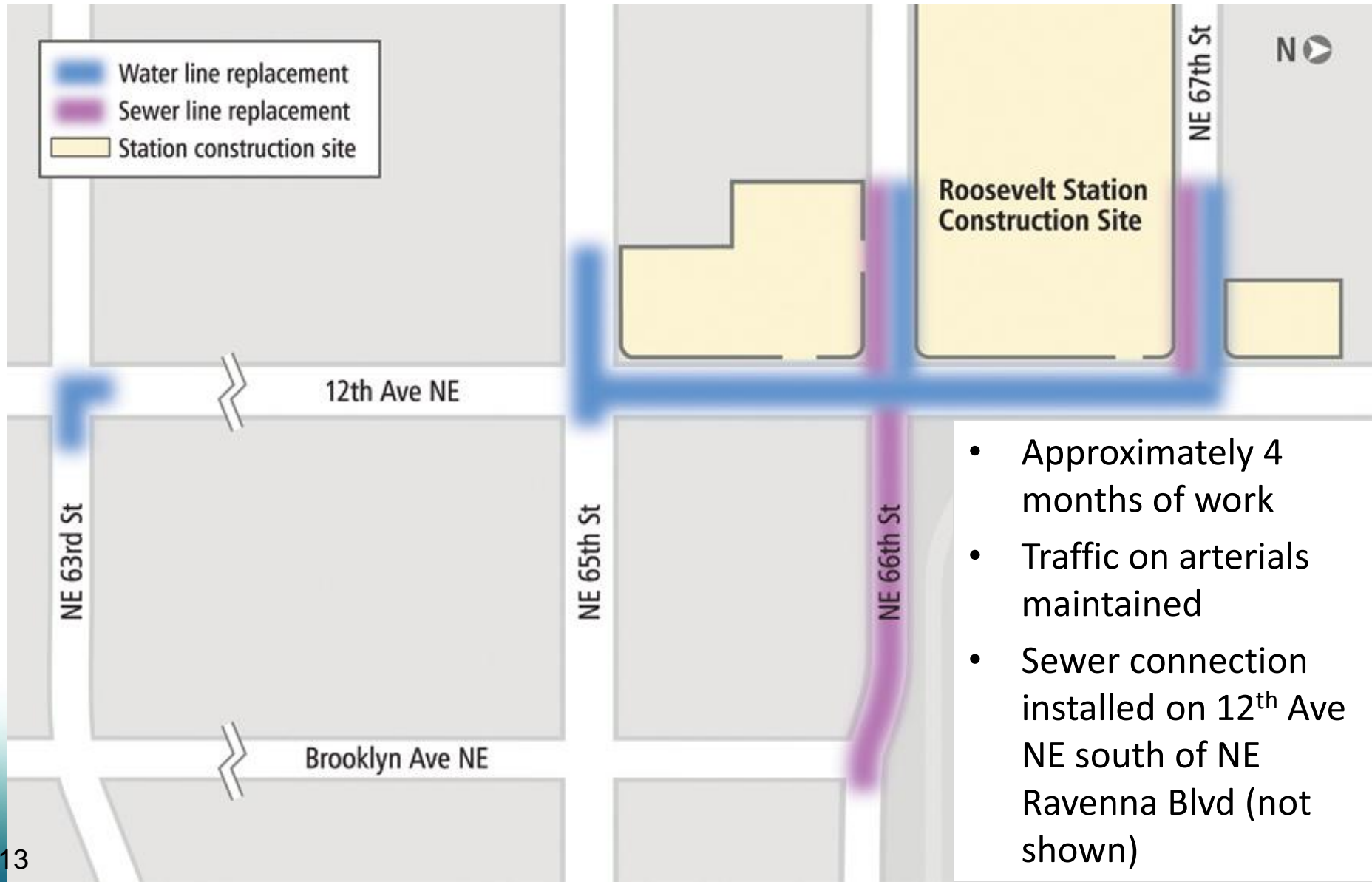
Service During Early Utility Work

Early – Mid 2013

- Potential short-term interruption to Comcast service; Comcast will notify affected customers
- Few interruptions to CenturyLink service; CenturyLink to contact potentially affected customers
- Potential short-term interruption of electricity; Seattle City Light will provide notification of any expected outages

Water & Sewer Line Upgrades/Relocations

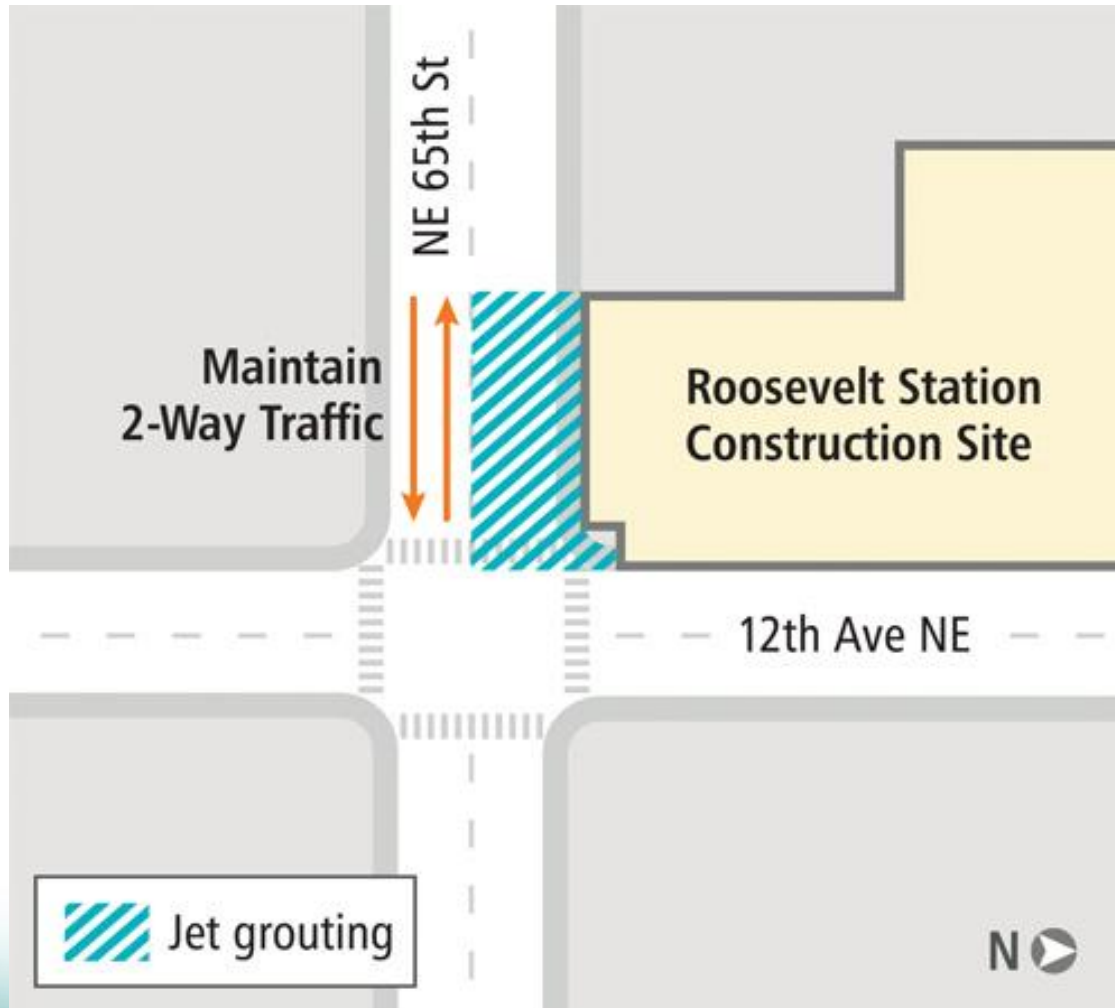
Late 2013 – Mid 2014



- Approximately 4 months of work
- Traffic on arterials maintained
- Sewer connection installed on 12th Ave NE south of NE Ravenna Blvd (not shown)

Jet Grouting on NE 65th St

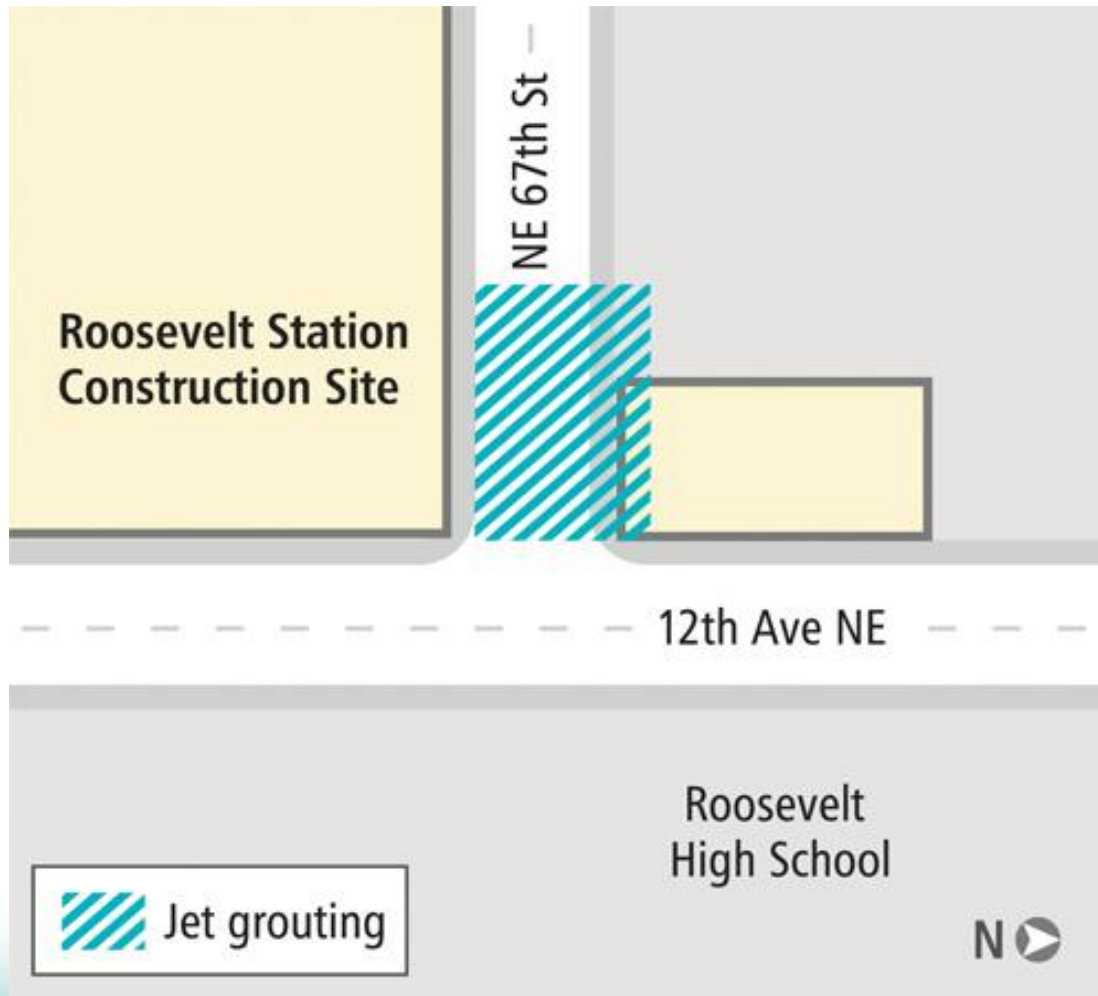
Starts Late 2013



- Approximately 3 months of work
- Daytime work only
- No parking in this area during this work

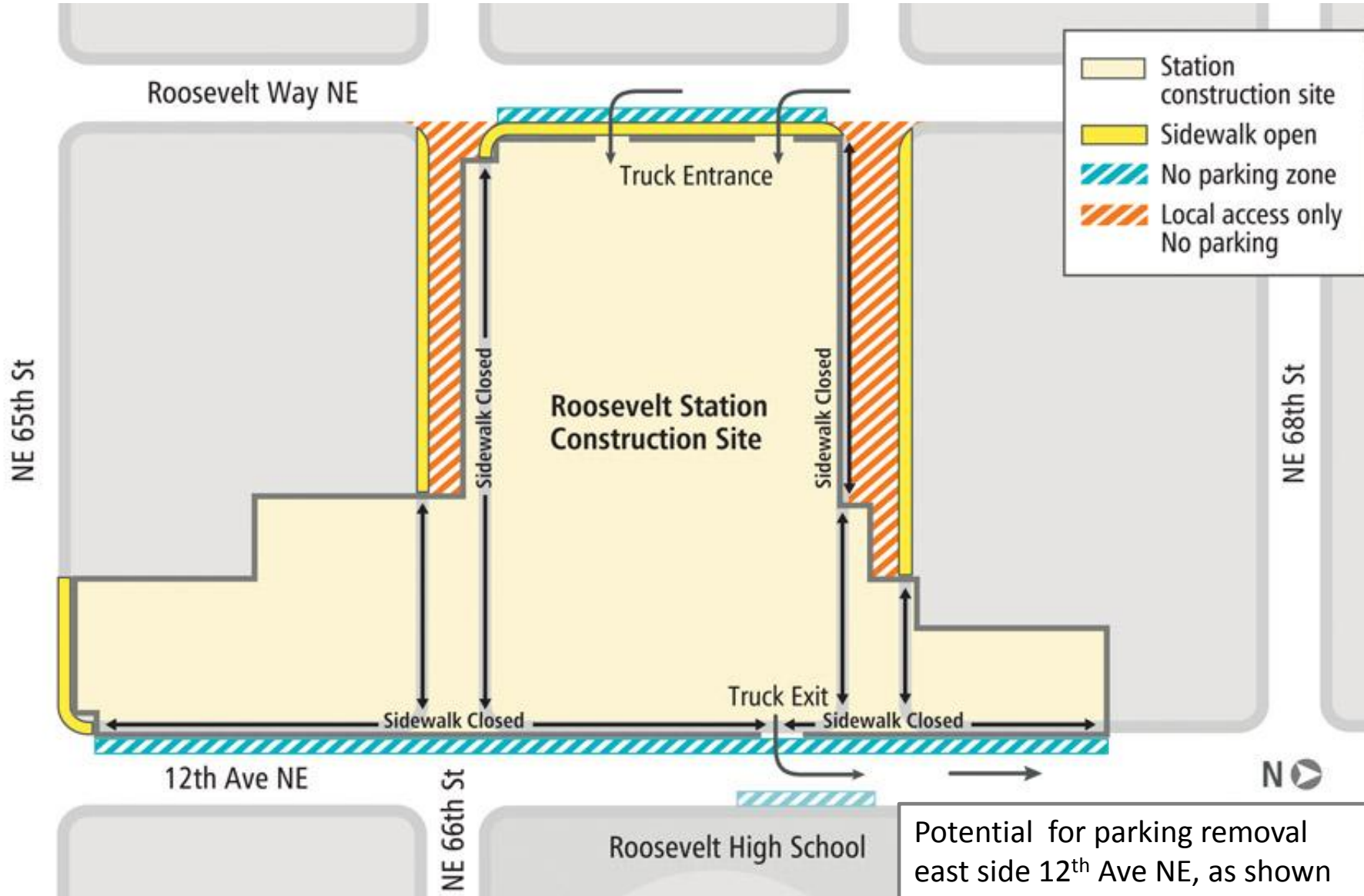
Jet Grouting on NE 67th St

Starts Early 2014



- Approximately 3 months of work
- Daytime work only
- No parking in this area during this work

Excavation, Tunneling & Station Construction Late 2013 - 2019



Roosevelt Nighttime Noise Variance Update

- Roosevelt nighttime noise variance would allow nighttime work during station excavation and tunneling
- Noise variance limits would apply 10pm - 7am weekdays, 10pm - 9am weekends, holidays
- City of Seattle issued notice of decision to approve variance in Nov. 2012
- City's decision has been appealed

Roosevelt Noise Mitigation Update

- If approved, nighttime noise variance contains noise mitigation requirements
- Additional restrictions in Sound Transit's excavation and tunneling contract:
 - No nighttime hauling of “muck” (also known as “spoils”) unless approved by ST
 - No secant pile wall construction past 7 p.m. unless approved by ST



Reducing Construction Impacts to Our Neighbors

- Communicate and be responsive
- Apply lessons learned to construction contracts
- Maintain an attractive construction wall
- Promote the local business district
- 24-hour construction hotline (888-298-2395)
- ST seeking construction parking near site



Promote the Roosevelt Business District

- Developed marketing plan with local businesses
 - Install street banners, wayfinding kiosks
 - Research and promote ways to access the business district (parking, bus, bike, ped)
 - Cross-promote community events



Project Next Steps



- Implement marketing plan for Roosevelt business district
- Station 90% design open house – 2014



Questions?



Get Involved and Stay Informed



- Attend Final Design Open Houses
 - Learn more about your neighborhood station's design including bike facilities, pedestrian and bike connections and public art
- Sign Up to Receive Email Updates
 - www.soundtransit.org/subscribe
- Sound Transit Website
 - www.soundtransit.org/northlink
- Contact Ellen Blair:
 - 206.398.5300
 - northlink@soundtransit.org

